

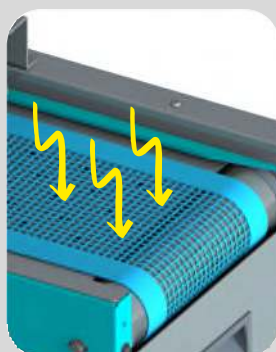
UV LED dryer for curing flat objects and substrates

Plug & Play

Designed for production, laboratory tests and R&D activities, used for the polymerization of inks, varnishes, adhesives and resins



PLC with display for settings viewing



Vacuum table for holding light objects



Perforated conveyor belt resistant to high temperatures



Adjustment of belt forward speed and direction



Removable and adjustable centering guides



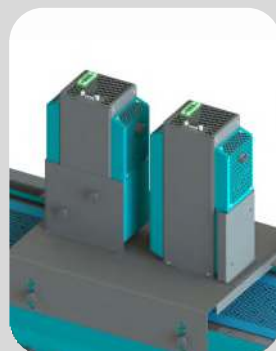
Tunnel with integrated lamp holder



Lamp height adjustment



DROLED UV LED lamp with different wavelengths



Possibility to install 2 DROLED UV LED lamps



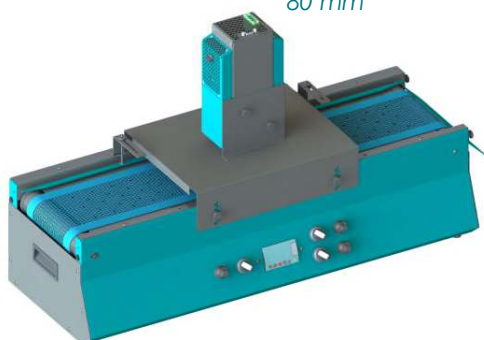
Immediate lamp On/Off switching and intensity regulation

Installation of 1 or 2 DROLED UV LED lamps

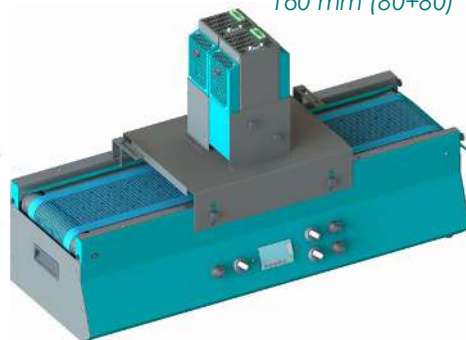
CONVEY CURE is designed for the installation of one or two DROLED UV LED lamps, positioned one after the other or side by side, for curing processes that require greater intensity or the presence of mixed wavelengths in the same system.

| DROLED L70 | | |
|-----------------------|---------------------|---------------------------|
| Wavelength peak | 365nm | 385 / 395 / 405nm |
| Irradiance peak | 8 W/cm ² | 8-12-16 W/cm ² |
| Emitting window width | 80 mm | 80 mm |

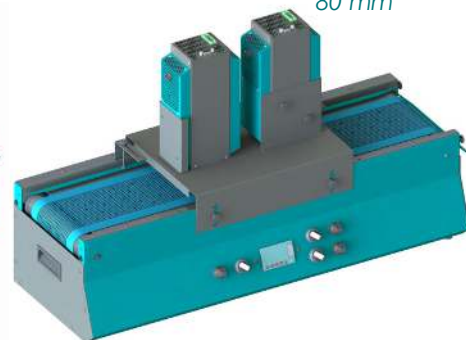
Emitting window width
80 mm



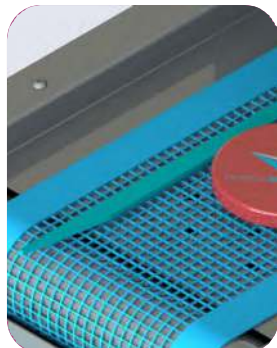
Emitting window width
160 mm (80+80)



Emitting window width
80 mm



Conveyor belt with guides



Teflon-coated glass fiber, resistant to UV radiation and perforated to allow aspiration and stabilization of light objects.

Adjustable and removable centering guides

Tunnel with lamp/s holder



Integrated holder

Manual regulation of the lamp height with knobs, single steps of 5 mm

Fishbone system

Height Min 5 / Max 50 mm from the belt

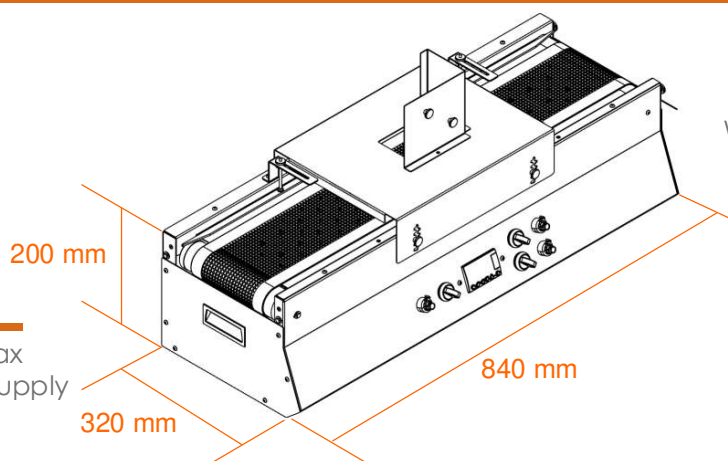
Dimensions

Dryer

Width 320 mm
Length 840 mm
Height with lamp 510 mm
Standard speed 0.2/20 mt/s
or custom

Technical data

Electric consumption 1000W max
Universal multi-voltage power supply
110-277V / AC 50-60 Hz
Weight 40 Kg



Conveyor Belt

Width 160 mm
Working width 220 mm
Height from the floor
200 mm

